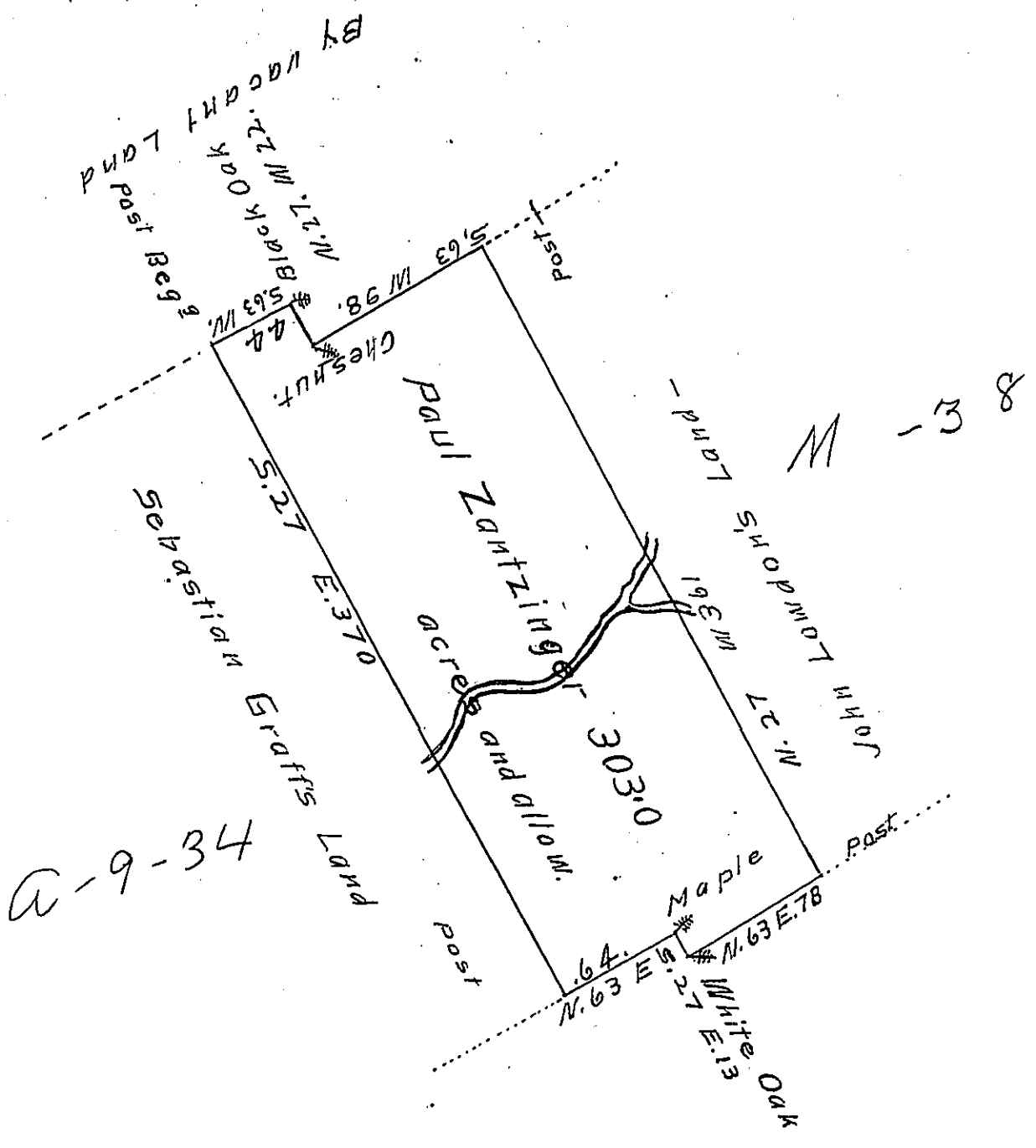


FORM NO. 1.



The Draught of Tract of Land called Paules, Situate on a Branch of Middle Creek in Penn's Township, Northumberland County, containing three hundred and three acres with the usual Allowance of six Acres & cent for Roads &c. Surveyed the fifth Day of May Anno Domini 1773 in pursuance of a Warrant from the Honorable the Proprietaries to Paul Zantzinger; bearing Date at Philadelphia the 14th Day of December Anno Domini 1772. -

Wm Maclay

To John Lukens Esq. S^r G^r
of the Province of Pennsylvania.

IN TESTIMONY that the above is a copy of the original remaining on file in the Department of Internal Affairs of Pennsylvania, made conformably to an Act of Assembly approved the 16th day of February 1833, I have hereunto set my hand and caused the Seal of said Department to be affixed at Harrisburg, this 19th day of August 1907

Henry Horvath
Secretary of Internal Affairs.